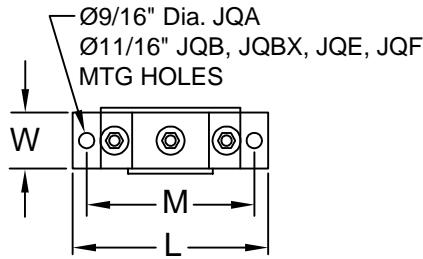
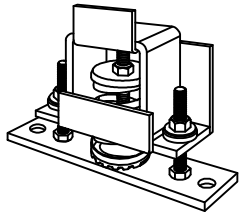
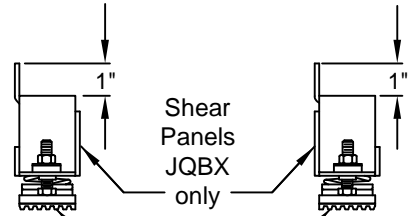


JQBX Style R
shown

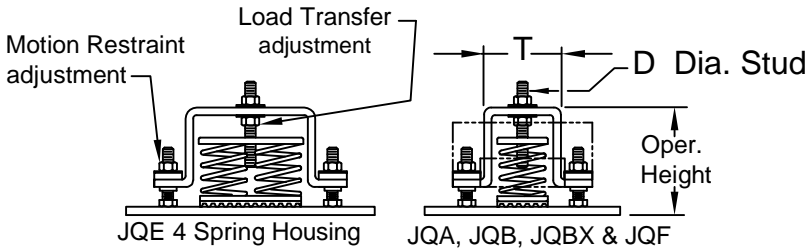


Style R
for attaching
to opposite
side of
equipment.



Style Q
for attaching
to opposite
side of
equipment.

Option P
Neoprene Base Pad Regardless of Style



Style V or K

Notes:

Dimensions in Inches. Loads in Pounds.

Style K Load Transfer Nut is pinned to stud.

Neoprene pad 1/4" thick under spring regardless of style.

Adjust Load Transfer while Motion Restraint adjustments are loose.

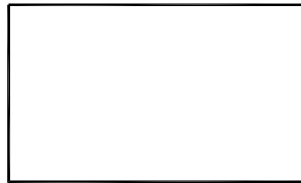
All Type JQ Isolator/Restraints feature large diameter springs with O.D. not less than 80% of rated deflection height, except 1580 with 2-1/4" travel to collapse.

For compact support of heavy loads, some JQ's include inner springs.
For low profile support of heavy loads, JQE's have clustered springs.

Surface Treatment

Housings Hot Dip Galvanized (HDG)
Hardware Zinc Plate.
Springs Powder Coated or Zinc Plated.

Isolator Locations



| Isolator Locations | Isolator Selections |
|--------------------|---------------------|
| | |
| | |
| | |
| | |
| | |
| | |
| | |
| | |

TYPICAL CALLOUT

Housing Size **JQA E500 R P** Option
Spring Size _____ Style V, K, R or Q

RATED LOAD

E Springs 1" Deflection

| JQA | JQB/JQBX | JQE |
|------|----------|-------|
| E21 | ET255 | E976 |
| E55 | ET347 | E1272 |
| E79 | ET473 | E1660 |
| E106 | E630 | E2000 |
| E143 | E806 | E2532 |
| E187 | E1030 | E3204 |
| E244 | E1230 | E4128 |
| E318 | E1490 | 6080 |
| E415 | E1810 | |
| E500 | E2210 | |
| E633 | | |
| E690 | | |
| E801 | | |

OPA - 0070
PRE-APPROVED MAXIMUM ALLOWABLE LOADS

| SIZE | HORIZ. | VERT. |
|------|--------|-------|
| JQA | 800 | 1660 |
| JQB | 1000 | 1600 |
| JQBX | 1500 | 2000 |
| JQE | 3200 | 4300 |

| Housing Size | L | W | M | T | D | Approx. Oper. HT. |
|--------------|--------|-------|----|---------|-----|-------------------|
| JQA | 7 | 2 | 6 | 2 - 3/4 | 3/8 | 4 - 1/2 |
| JQB/JQBX | 10-1/2 | 3-1/2 | 9 | 4 | 1/2 | 5 - 1/2 |
| JQE | 14 | 5 | 12 | 6 | 5/8 | 5 |



CALIFORNIA DYNAMICS CORPORATION
5572 ALHAMBRA AVE. LOS ANGELES CA, 90032
PH 323-223-3882 FAX 323-223-7941

email: caldyn@earthlink.net
"CALL US - TO SET THINGS RIGHT"

Assoc. Member



JOB: _____

CUSTOMER: _____

TAG: _____

Dwg. No. **F308** Date **02/11/14**

PREP By: _____ Date _____

CHKD By: _____ Date _____

TYPE **JQ**

ISOLATOR/RESTRAINTS
WITH CALIFORNIA
PRE-APPROVED
SEISMIC PROTECTION
OPA - 0070
1" DEFLECTION

DO NOT SCALE DRAWING