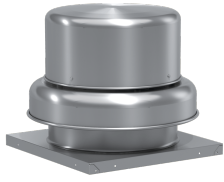


# Centrifugal Downblast Exhaust Fan, Model GB-180, Belt Drive, Less Motor & Drive Package, 1371-5677 CFM

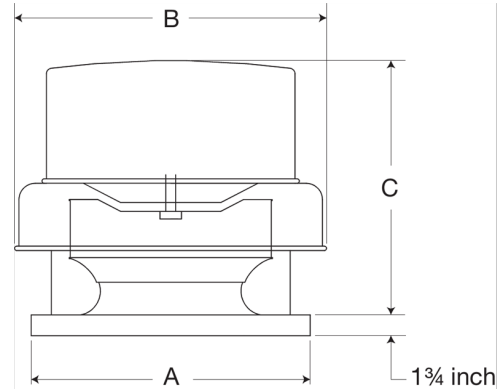


Model GB, belt drive centrifugal roof exhaust fans are designed to meet the general clean air exhaust requirements for industrial and commercial buildings. Units feature a fully rolled windband bead for increased stability and easy transport. Fresh outside air is drawn in under the motor cover to maximize motor life.

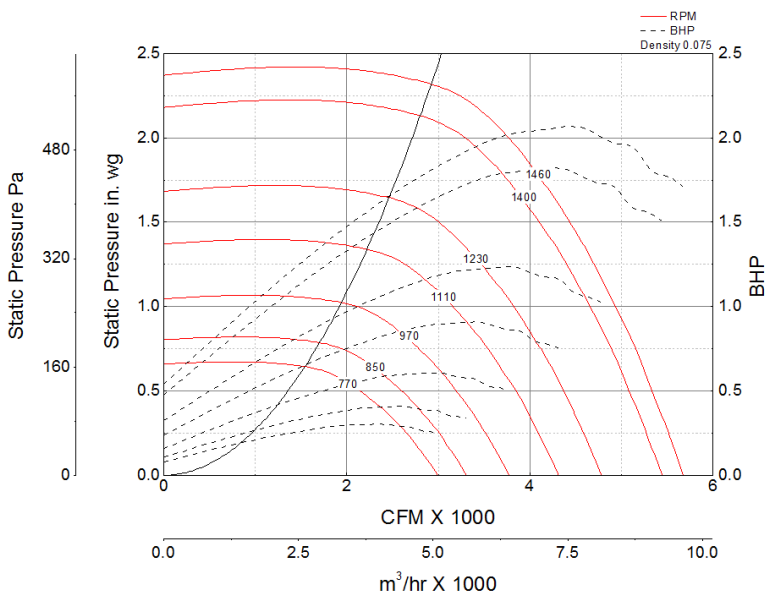
- 30 x 30 inch base with prepunched mounting holes for easy attachment to roof curb
- Multiple motor and drive options available to meet any performance and application need
- 26.5 x 26.5 inch recommended roof opening

### Certifications

Seismic  
AMCA Sound & Air  
High Wind and Hurricane  
UL/cUL 705



### Performance Characteristics



Note: The maximum FRPM for each motor horsepower is shown. For additional performance ranges available for this fan, refer to the performance table.

### Construction Features

Drive Type	Belt Drive
Impeller Type	Centrifugal Wheel
Impeller Material	Aluminum
Housing Material	Spun Aluminum
Certifications	Seismic
Certifications	AMCA Sound & Air
Certifications	High Wind and Hurricane
Certifications	UL/cUL 705
Drive Package Description	No drive package included
Required Accessory	Roof curb for new installations

### Motor Information

Motor Included	No
----------------	----

## Air and Sound Performance

Motor HP	Max BHP	Max Fan RPM	Min Fan RPM	Ps (in. wg)	0	0.125	0.25	0.375	0.5	0.625	0.75	0.875	1	1.25	1.5	1.75	2	2.25
1/4	0.16	620	500	CFM	2,411	2,207	1,936	1,527	2,139	1,701	1,929	2,522	2,083	2,600	2,969	3,747	3,253	3,210
				Sones	5.9	6.9	6.8	5.5	7.6	6.6	7.9	10.9	10.2	13	15.5	20	19.6	21
1/4	0.30	770	620	CFM	2,411	2,207	1,936	1,527	2,139	1,701	1,929	2,522	2,083	2,600	2,969	3,747	3,253	3,210
				Sones	5.9	6.9	6.8	5.5	7.6	6.6	7.9	10.9	10.2	13	15.5	20	19.6	21
1/3	0.21	680	550	CFM	2,411	2,207	1,936	1,527	2,139	1,701	1,929	2,522	2,083	2,600	2,969	3,747	3,253	3,210
				Sones	5.9	6.9	6.8	5.5	7.6	6.6	7.9	10.9	10.2	13	15.5	20	19.6	21
1/3	0.40	850	680	CFM	2,411	2,207	1,936	1,527	2,139	1,701	1,929	2,522	2,083	2,600	2,969	3,747	3,253	3,210
				Sones	5.9	6.9	6.8	5.5	7.6	6.6	7.9	10.9	10.2	13	15.5	20	19.6	21
1/2	0.16	630	510	CFM	2,411	2,207	1,936	1,527	2,139	1,701	1,929	2,522	2,083	2,600	2,969	3,747	3,253	3,210
				Sones	5.9	6.9	6.8	5.5	7.6	6.6	7.9	10.9	10.2	13	15.5	20	19.6	21
1/2	0.31	780	630	CFM	2,411	2,207	1,936	1,527	2,139	1,701	1,929	2,522	2,083	2,600	2,969	3,747	3,253	3,210
				Sones	5.9	6.9	6.8	5.5	7.6	6.6	7.9	10.9	10.2	13	15.5	20	19.6	21
1/2	0.60	970	780	CFM	2,411	2,207	1,936	1,527	2,139	1,701	1,929	2,522	2,083	2,600	2,969	3,747	3,253	3,210
				Sones	5.9	6.9	6.8	5.5	7.6	6.6	7.9	10.9	10.2	13	15.5	20	19.6	21
3/4	0.46	890	730	CFM	2,411	2,207	1,936	1,527	2,139	1,701	1,929	2,522	2,083	2,600	2,969	3,747	3,253	3,210
				Sones	5.9	6.9	6.8	5.5	7.6	6.6	7.9	10.9	10.2	13	15.5	20	19.6	21
3/4	0.90	1110	890	CFM	2,411	2,207	1,936	1,527	2,139	1,701	1,929	2,522	2,083	2,600	2,969	3,747	3,253	3,210
				Sones	5.9	6.9	6.8	5.5	7.6	6.6	7.9	10.9	10.2	13	15.5	20	19.6	21
1	0.64	990	850	CFM	2,411	2,207	1,936	1,527	2,139	1,701	1,929	2,522	2,083	2,600	2,969	3,747	3,253	3,210
				Sones	5.9	6.9	6.8	5.5	7.6	6.6	7.9	10.9	10.2	13	15.5	20	19.6	21
1	1.23	1230	990	CFM	2,411	2,207	1,936	1,527	2,139	1,701	1,929	2,522	2,083	2,600	2,969	3,747	3,253	3,210
				Sones	5.9	6.9	6.8	5.5	7.6	6.6	7.9	10.9	10.2	13	15.5	20	19.6	21
1 1/2	0.93	1120	920	CFM	2,411	2,207	1,936	1,527	2,139	1,701	1,929	2,522	2,083	2,600	2,969	3,747	3,253	3,210
				Sones	5.9	6.9	6.8	5.5	7.6	6.6	7.9	10.9	10.2	13	15.5	20	19.6	21
1 1/2	1.81	1400	1120	CFM	2,411	2,207	1,936	1,527	2,139	1,701	1,929	2,522	2,083	2,600	2,969	3,747	3,253	3,210
				Sones	5.9	6.9	6.8	5.5	7.6	6.6	7.9	10.9	10.2	13	15.5	20	19.6	21
2	1.06	1170	1070	CFM	2,411	2,207	1,936	1,527	2,139	1,701	1,929	2,522	2,083	2,600	2,969	3,747	3,253	3,210
				Sones	5.9	6.9	6.8	5.5	7.6	6.6	7.9	10.9	10.2	13	15.5	20	19.6	21
2	2.05	1460	1170	CFM	2,411	2,207	1,936	1,527	2,139	1,701	1,929	2,522	2,083	2,600	2,969	3,747	3,253	3,210
				Sones	5.9	6.9	6.8	5.5	7.6	6.6	7.9	10.9	10.2	13	15.5	20	19.6	21



- Greenheck Fan Corporation certifies that the model shown herein is licensed to bear the AMCA Seal. The ratings shown are based on tests and procedures performed in accordance with AMCA Publication 211 and AMCA Publication 311 and comply with the requirements of the AMCA Certified Ratings Program.
- Performance certified is for installation type A: Free inlet, Free outlet.
- Power rating (BHP/kW) includes transmission losses.
- Performance ratings include the effects of birdscreen.
- The sound ratings shown are loudness values in fan sones at 5 ft. (1.5 m) in a hemispherical free field calculated per AMCA Standard 301. Values shown are for installation type A: free inlet hemispherical sone levels.