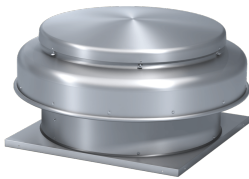
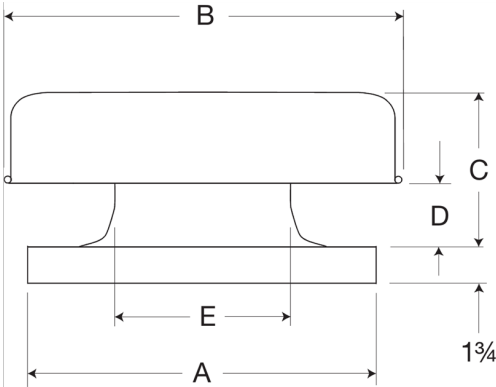


Spun Aluminum Gravity Ventilator, Size 30, Model GRS-30



- For natural gravity or positive pressure systems, model GRS offers excellent performance and durability for intake or relief applications. Featuring an exceptional low silhouette design and rugged construction this model is both efficient and economical.
- 40 x 40 inch base with prepunched mounting holes for easy attachment to roof curb
 - All aluminum exterior for corrosion-resistant construction
 - Integral birdscreen to prevent entry of birds and small objects

Certifications



Performance Characteristics

No Fan Curve Available.

Construction Features

Mounting	Roof curb
Housing Material	Spun Aluminum
Includes	Birdscreen
Required Accessory	Roof curb for new installations