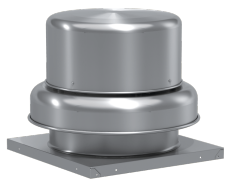


## Centrifugal Downblast Exhaust Fan, Product # GB-097-4119XQDR3, 205-376 CFM



Model GB, belt drive centrifugal roof exhaust fans are designed to meet the general clean air exhaust requirements for industrial and commercial buildings. Units feature a fully rolled windband bead for increased stability and easy transport. Fresh outside air is drawn in under the motor cover to maximize motor life.

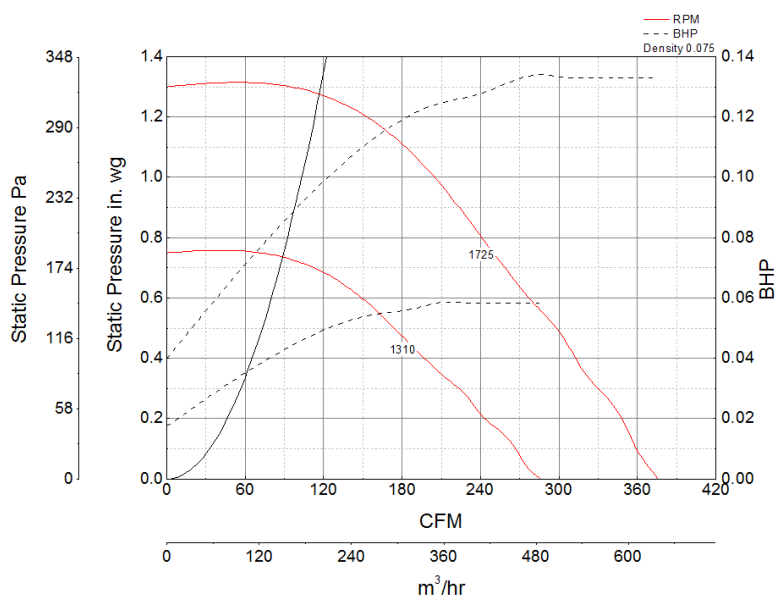
- 19 x 19 inch base with prepunched mounting holes for easy attachment to roof curb
- Variable pitch adjustable motor pulley to optimize fan performance
- 15.5 x 15.5 inch recommended roof opening

### Certifications

AMCA Sound & Air  
High Wind and Hurricane  
Seismic  
UL/cUL 705



### Performance Characteristics



### Construction Features

|                           |                                 |
|---------------------------|---------------------------------|
| Drive Type                | Belt Drive                      |
| Impeller Type             | Centrifugal Wheel               |
| Impeller Material         | Aluminum                        |
| Housing Material          | Spun Aluminum                   |
| Includes                  | Assembled drive package         |
| Includes                  | Disconnect switch               |
| Certifications            | AMCA Sound & Air                |
| Certifications            | High Wind and Hurricane         |
| Certifications            | Seismic                         |
| Certifications            | UL/cUL 705                      |
| Drive Package Description | Motor and drives assembled      |
| Required Accessory        | Roof curb for new installations |

### Air and Sound Performance

| Motor HP | Max BHP | Max Fan RPM | Min Fan RPM | Ps (in. wg) | 0    | 0.125 | 0.25 | 0.375 | 0.5  | 0.625 | 0.75 | 0.875 | 1   |
|----------|---------|-------------|-------------|-------------|------|-------|------|-------|------|-------|------|-------|-----|
| 1/4      | 0.13    | 1725        | 1310        | CFM         | 376  | 356   | 339  | 316   | 297  | 273   | 250  | 227   | 205 |
|          |         |             |             | Sones       | 11.3 | 11.2  | 11.2 | 10.8  | 10.5 | 10.2  | 9.9  | 9.7   | 9.5 |